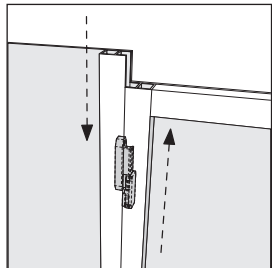
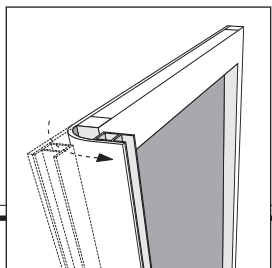


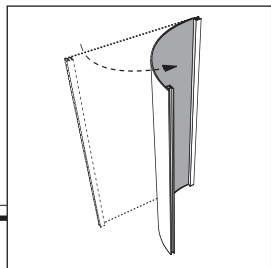
Triangle Counter



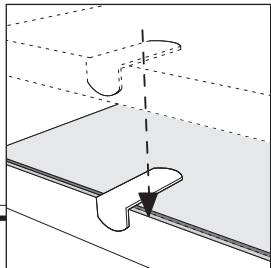
Attach / detach panels by sliding vertically...



...flex panel ends to create corners...

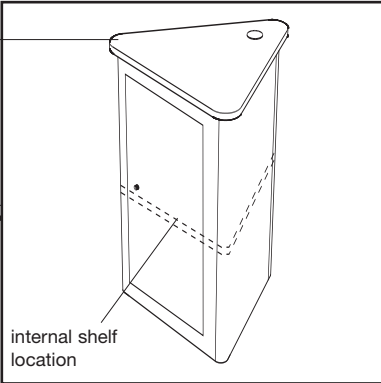


...or flex wide panels to create curves...



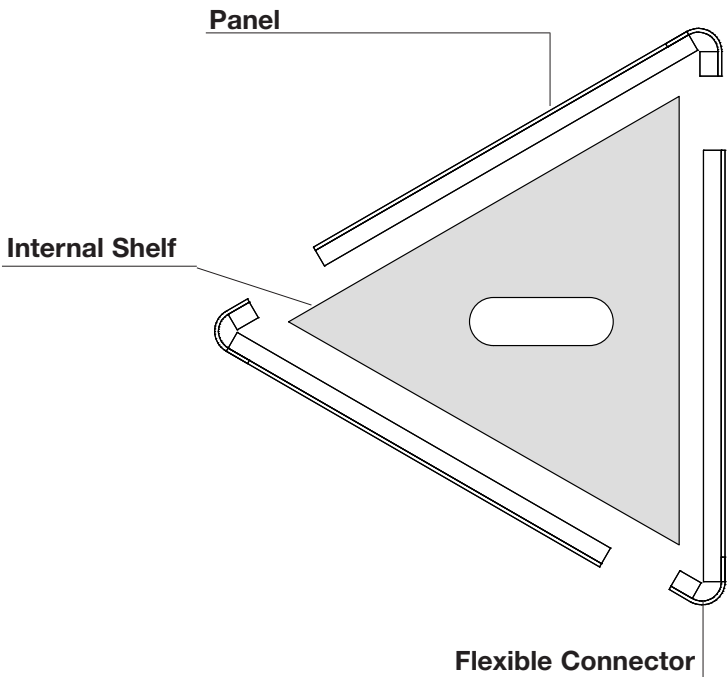
...then hook shelf onto mid-panel shelf brace.

Place countertop in position.

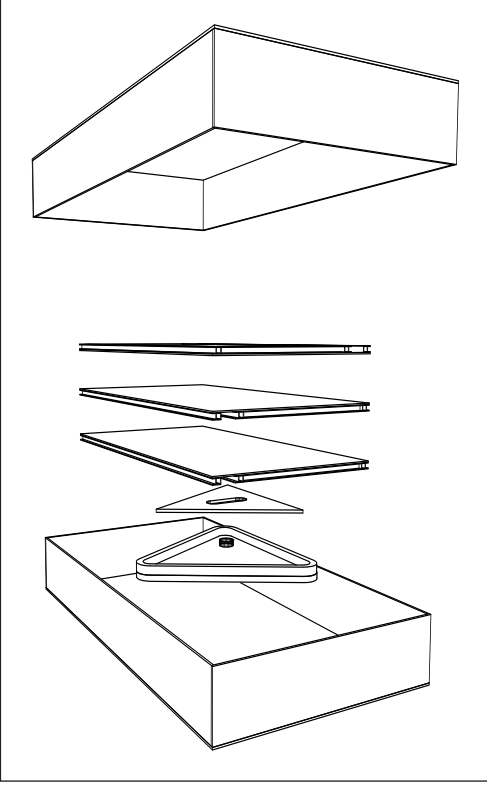


Completed Counter

internal shelf location



Repacking Diagram



Your FlexCounter™ is so well-constructed... We GUARANTEE It!

WHAT IS COVERED
Repairs: This warranty covers repairs or replacements to correct defects during the Warranty Period.
Warranty Period: The warranty period begins on the day you receive covered Nomadic products that have been purchased on or after September 20, 2002, and ends at the expiration of the coverage listed below.
Coverage: FlexCounters are covered for defects due to materials or craftsmanship for one year while owned by the original retail purchaser.
Chargeable Repairs: Items not covered by warranty may be repaired at a reasonable cost that is agreed to in advance between you and Nomadic.
Shipping Costs: You will pay in and outbound shipping charges.

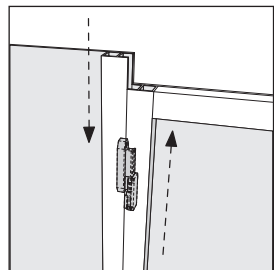
WHAT IS NOT COVERED
Graphics: No graphic, computer-graphic or photographic treatments of any kind are covered by this warranty. Damage due to vandalism, theft, fire, natural disasters, or losses in shipment may be covered by your insurance and/or common carrier. Please check these resources prior to calling Nomadic.
Consequential Expenses: Economic losses, including personal time and inconvenience, are not covered. Some states do not allow limitations on how long an implied warranty will last or the exclusion or limitation of incidental or consequential damage, so cited limitation or exclusions may not apply to you.

TO ARRANGE A REPAIR
 Call your local Nomadic Representative or Nomadic Display's Customer Service Center with your sales number and provide any other information that is requested.

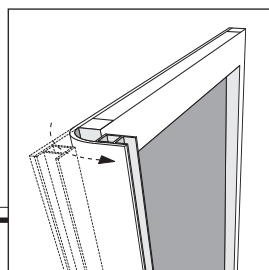
Sales Order Number _____

Warning! Do Not Stand on Counter. Maximum load is: 100lbs (45.45Kgs).

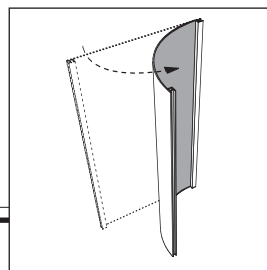
Square Counter



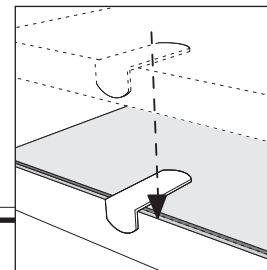
Attach / detach panels by sliding vertically...



...flex panel ends to create corners...

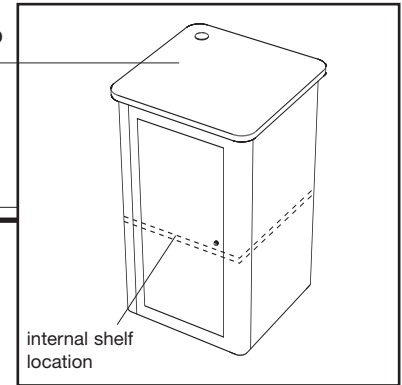


...or flex wide panels to create curves...



...then hook shelf onto mid-panel shelf brace.

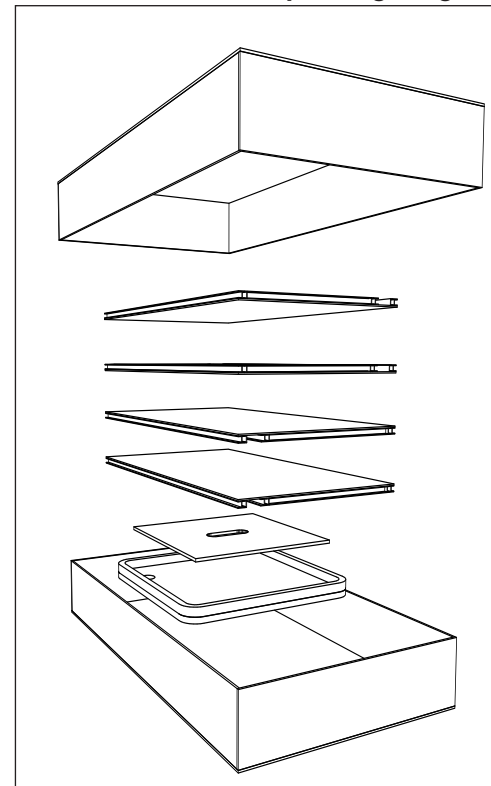
Place countertop in position.



Completed Counter

internal shelf location

Repacking Diagram



Your FlexCounter™ is so well-constructed... We GUARANTEE It!

WHAT IS COVERED

Repairs: This warranty covers repairs or replacements to correct defects during the Warranty Period.

Warranty Period: The warranty period begins on the day you receive covered Nomadic products that have been purchased on or after September 20, 2002, and ends at the expiration of the coverage listed below.

Coverage: FlexCounters are covered for defects due to materials or craftsmanship for one year while owned by the original retail purchaser.

Chargeable Repairs: Items not covered by warranty may be repaired at a reasonable cost that is agreed to in advance between you and Nomadic.

Shipping Costs: You will pay in and outbound shipping charges.

WHAT IS NOT COVERED

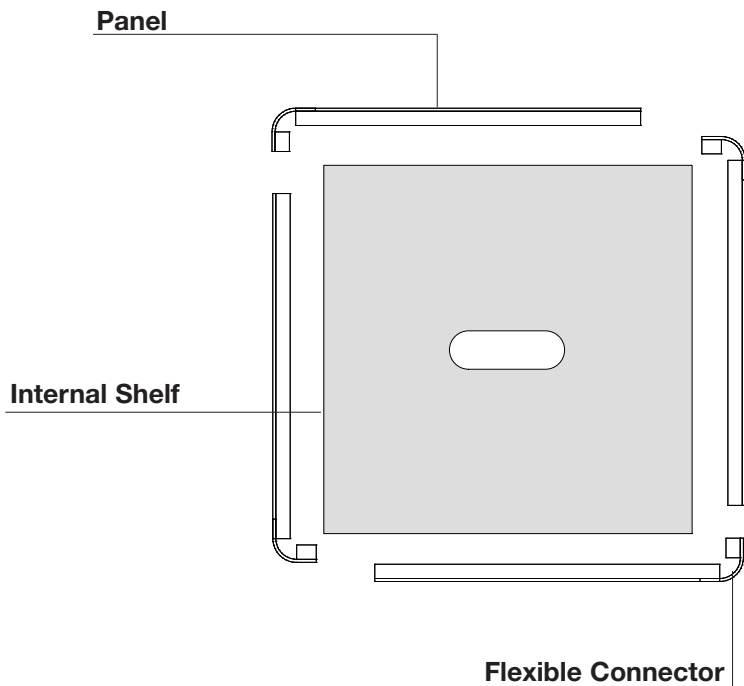
Graphics: No graphic, computer-graphic or photographic treatments of any kind are covered by this warranty. Damage due to vandalism, theft, fire, natural disasters, or losses in shipment may be covered by your insurance and/or common carrier. Please check these resources prior to calling Nomadic.

Consequential Expenses: Economic losses, including personal time and inconvenience, are not covered. Some states do not allow limitations on how long an implied warranty will last or the exclusion or limitation of incidental or consequential damage, so cited limitation or exclusions may not apply to you.

TO ARRANGE A REPAIR

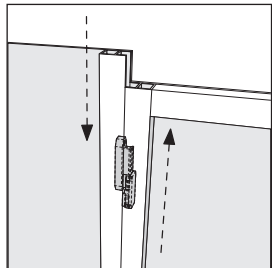
Call your local Nomadic Representative or Nomadic Display's Customer Service Center with your sales number and provide any other information that is requested.

Sales Order Number _____

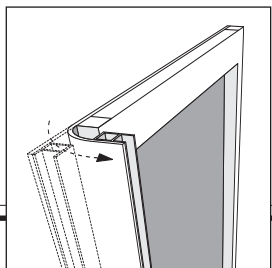


Warning! Do Not Stand on Counter. Maximum load is: 100lbs (45.45Kgs).

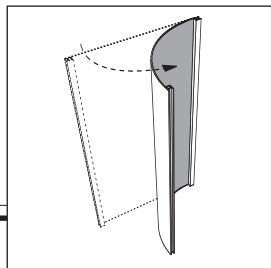
Capsule Counter



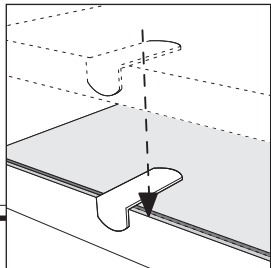
Attach / detach panels by sliding vertically...



...flex panel ends to create corners...

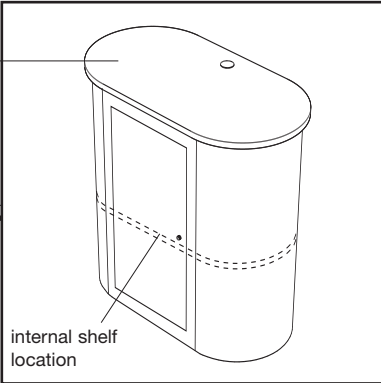


...or flex wide panels to create curves...



...then hook shelf onto mid-panel shelf brace.

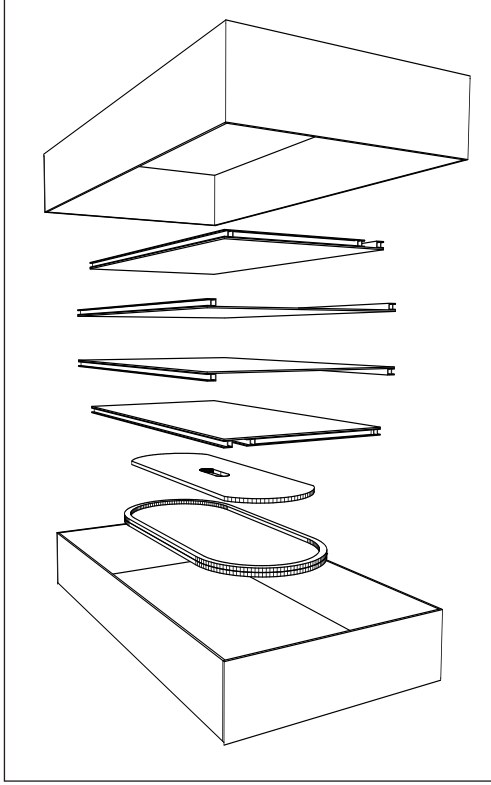
Place countertop in position.



Completed Counter

internal shelf location

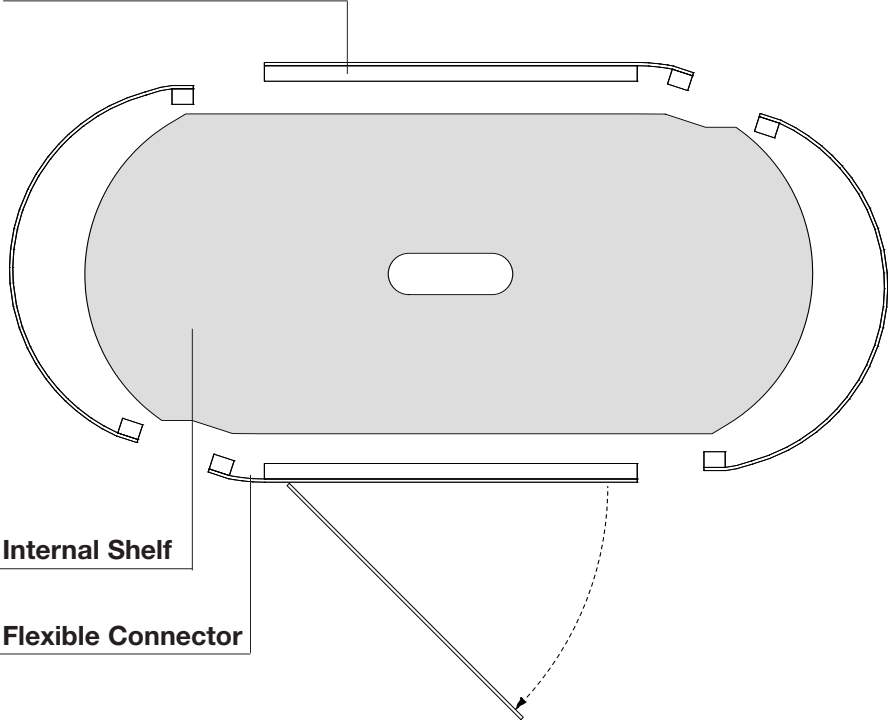
Repacking Diagram



Panel

Internal Shelf

Flexible Connector



Your FlexCounter™ is so well-constructed... We GUARANTEE It!

WHAT IS COVERED
Repairs: This warranty covers repairs or replacements to correct defects during the Warranty Period.
Warranty Period: The warranty period begins on the day you receive covered Nomadic products that have been purchased on or after September 20, 2002, and ends at the expiration of the coverage listed below.
Coverage: FlexCounters are covered for defects due to materials or craftsmanship for one year while owned by the original retail purchaser.
Chargeable Repairs: Items not covered by warranty may be repaired at a reasonable cost that is agreed to in advance between you and Nomadic.
Shipping Costs: You will pay in and outbound shipping charges.

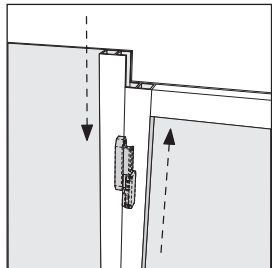
WHAT IS NOT COVERED
Graphics: No graphic, computer-graphic or photographic treatments of any kind are covered by this warranty. Damage due to vandalism, theft, fire, natural disasters, or losses in shipment may be covered by your insurance and/or common carrier. Please check these resources prior to calling Nomadic.
Consequential Expenses: Economic losses, including personal time and inconvenience, are not covered. Some states do not allow limitations on how long an implied warranty will last or the exclusion or limitation of incidental or consequential damage, so cited limitation or exclusions may not apply to you.

TO ARRANGE A REPAIR
 Call your local Nomadic Representative or Nomadic Display's Customer Service Center with your sales number and provide any other information that is requested.

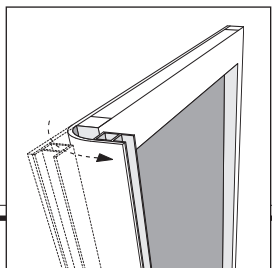
Sales Order Number _____

Warning! Do Not Stand on Counter. Maximum load is: 100lbs (45.45Kgs).

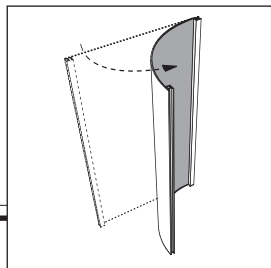
Curved Diamond Counter



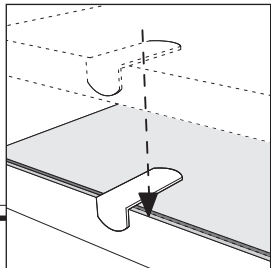
Attach / detach panels by sliding vertically...



...flex panel ends to create corners...

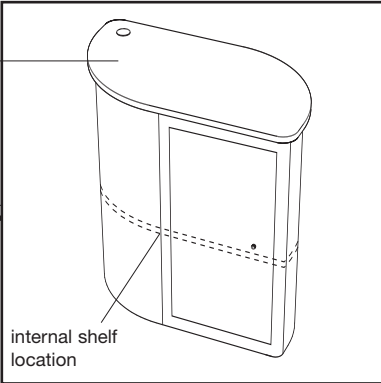


...or flex wide panels to create curves...



...then hook shelf onto mid-panel shelf brace.

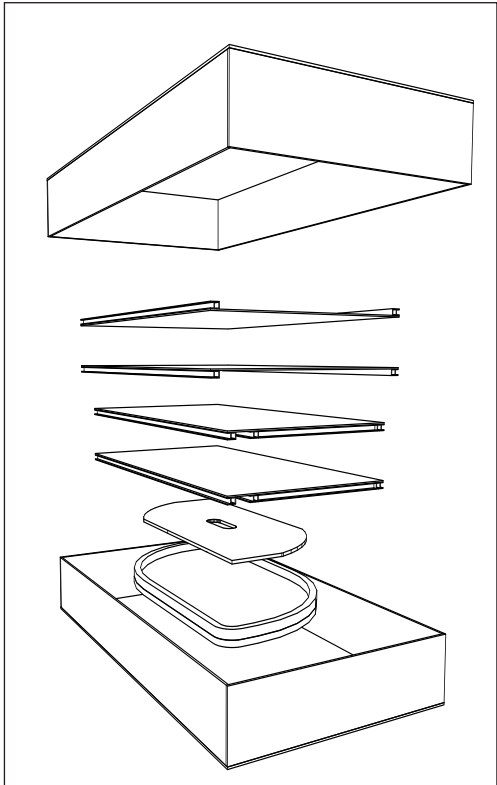
Place countertop in position.



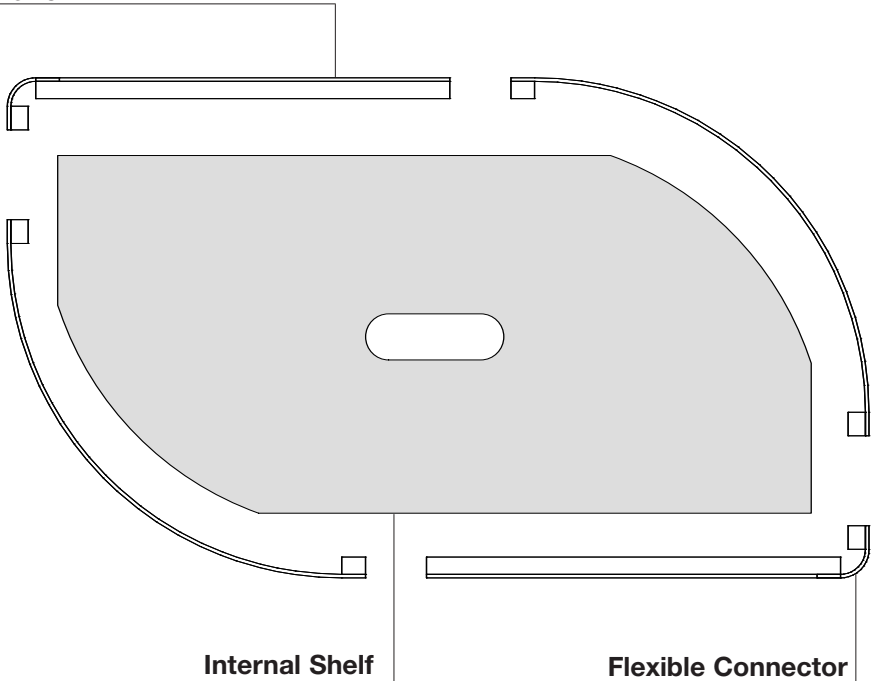
Completed Counter

internal shelf location

Repacking Diagram



Panel



Internal Shelf

Flexible Connector

Your FlexCounter™ is so well-constructed... We GUARANTEE It!

WHAT IS COVERED
Repairs: This warranty covers repairs or replacements to correct defects during the Warranty Period.
Warranty Period: The warranty period begins on the day you receive covered Nomadic products that have been purchased on or after September 20, 2002, and ends at the expiration of the coverage listed below.
Coverage: FlexCounters are covered for defects due to materials or craftsmanship for one year while owned by the original retail purchaser.
Chargeable Repairs: Items not covered by warranty may be repaired at a reasonable cost that is agreed to in advance between you and Nomadic.
Shipping Costs: You will pay in and outbound shipping charges.

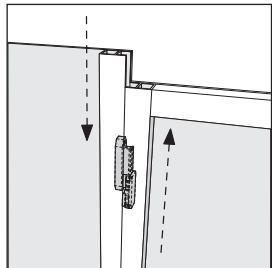
WHAT IS NOT COVERED
Graphics: No graphic, computer-graphic or photographic treatments of any kind are covered by this warranty. Damage due to vandalism, theft, fire, natural disasters, or losses in shipment may be covered by your insurance and/or common carrier. Please check these resources prior to calling Nomadic.
Consequential Expenses: Economic losses, including personal time and inconvenience, are not covered. Some states do not allow limitations on how long an implied warranty will last or the exclusion or limitation of incidental or consequential damage, so cited limitation or exclusions may not apply to you.

TO ARRANGE A REPAIR
 Call your local Nomadic Representative or Nomadic Display's Customer Service Center with your sales number and provide any other information that is requested.

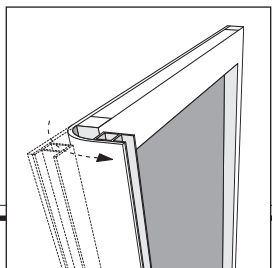
Sales Order Number _____

Warning! Do Not Stand on Counter. Maximum load is: 100lbs (45.45Kgs).

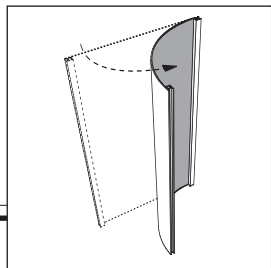
Diamond Counter



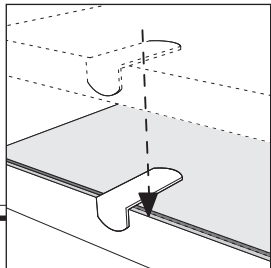
Attach / detach panels by sliding vertically...



...flex panel ends to create corners...

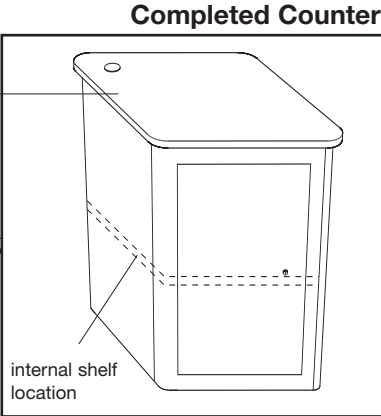


...or flex wide panels to create curves...



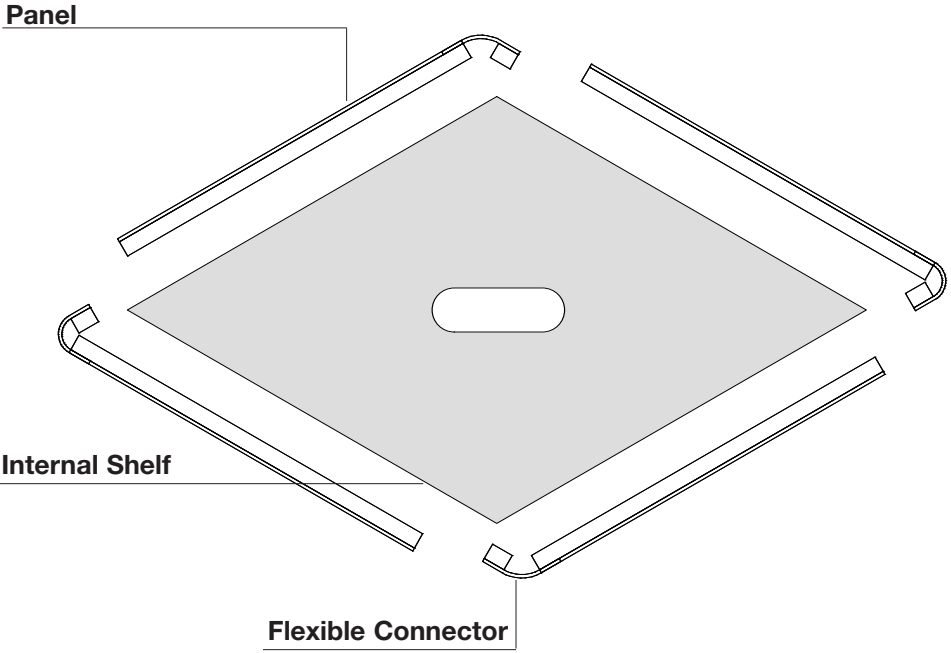
...then hook shelf onto mid-panel shelf brace.

Place countertop in position.

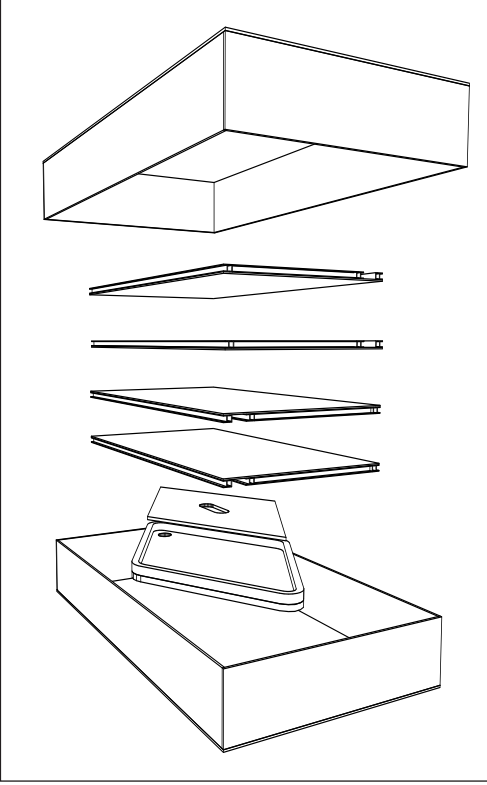


Completed Counter

internal shelf location



Repacking Diagram



Your FlexCounter™ is so well-constructed... We GUARANTEE It!

WHAT IS COVERED
Repairs: This warranty covers repairs or replacements to correct defects during the Warranty Period.
Warranty Period: The warranty period begins on the day you receive covered Nomadic products that have been purchased on or after September 20, 2002, and ends at the expiration of the coverage listed below.
Coverage: FlexCounters are covered for defects due to materials or craftsmanship for one year while owned by the original retail purchaser.
Chargeable Repairs: Items not covered by warranty may be repaired at a reasonable cost that is agreed to in advance between you and Nomadic.
Shipping Costs: You will pay in and outbound shipping charges.

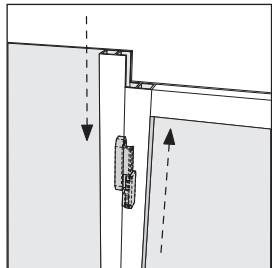
WHAT IS NOT COVERED
Graphics: No graphic, computer-graphic or photographic treatments of any kind are covered by this warranty. Damage due to vandalism, theft, fire, natural disasters, or losses in shipment may be covered by your insurance and/or common carrier. Please check these resources prior to calling Nomadic.
Consequential Expenses: Economic losses, including personal time and inconvenience, are not covered. Some states do not allow limitations on how long an implied warranty will last or the exclusion or limitation of incidental or consequential damage, so cited limitation or exclusions may not apply to you.

TO ARRANGE A REPAIR
 Call your local Nomadic Representative or Nomadic Display's Customer Service Center with your sales number and provide any other information that is requested.

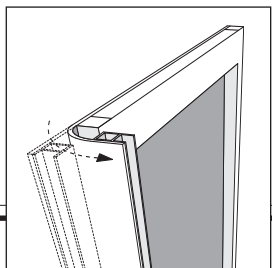
Sales Order Number _____

Warning! Do Not Stand on Counter. Maximum load is: 100lbs (45.45Kgs).

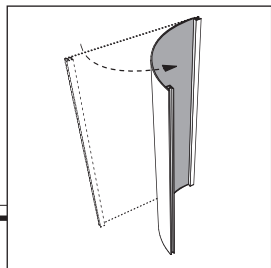
Trapezoid Counter



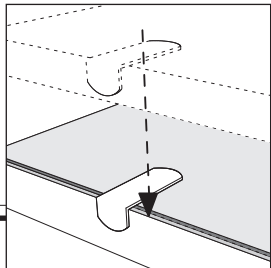
Attach / detach panels by sliding vertically...



...flex panel ends to create corners...

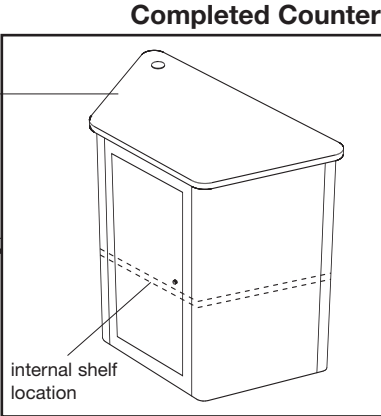


...or flex wide panels to create curves...



...then hook shelf onto mid-panel shelf brace.

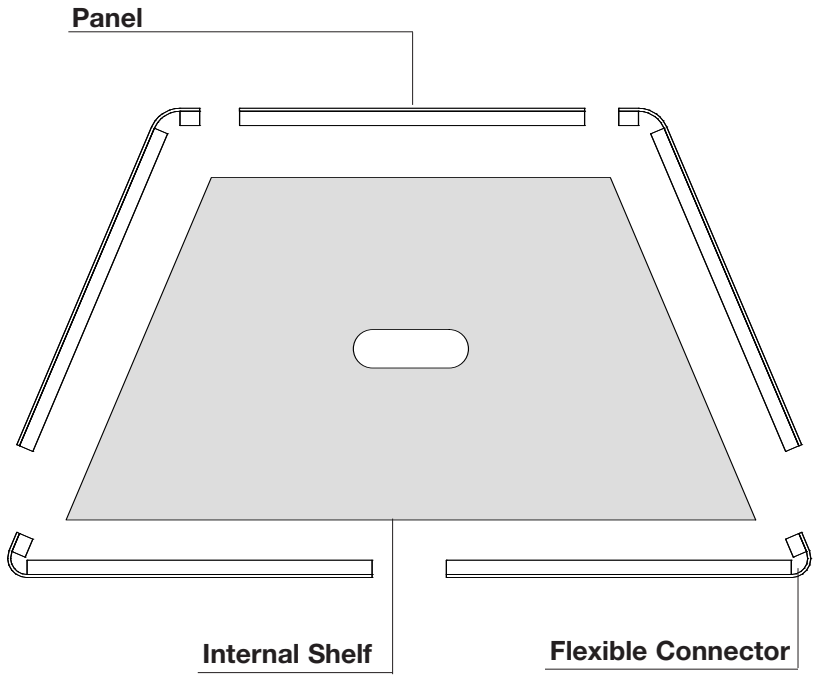
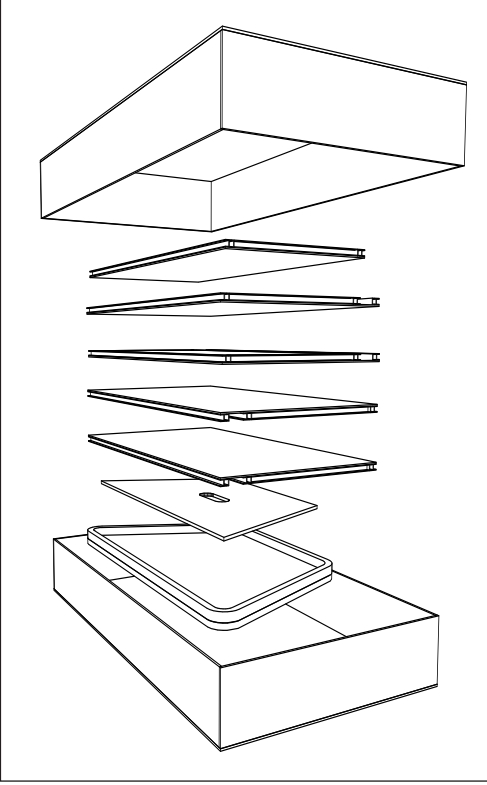
Place countertop in position.



Completed Counter

internal shelf location

Repacking Diagram



Your FlexCounter™ is so well-constructed... We GUARANTEE It!

WHAT IS COVERED
Repairs: This warranty covers repairs or replacements to correct defects during the Warranty Period.
Warranty Period: The warranty period begins on the day you receive covered Nomadic products that have been purchased on or after September 20, 2002, and ends at the expiration of the coverage listed below.
Coverage: FlexCounters are covered for defects due to materials or craftsmanship for one year while owned by the original retail purchaser.
Chargeable Repairs: Items not covered by warranty may be repaired at a reasonable cost that is agreed to in advance between you and Nomadic.
Shipping Costs: You will pay in and outbound shipping charges.

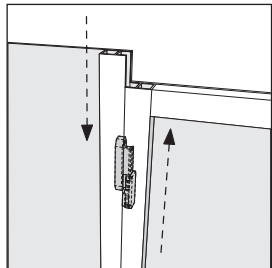
WHAT IS NOT COVERED
Graphics: No graphic, computer-graphic or photographic treatments of any kind are covered by this warranty. Damage due to vandalism, theft, fire, natural disasters, or losses in shipment may be covered by your insurance and/or common carrier. Please check these resources prior to calling Nomadic.
Consequential Expenses: Economic losses, including personal time and inconvenience, are not covered. Some states do not allow limitations on how long an implied warranty will last or the exclusion or limitation of incidental or consequential damage, so cited limitation or exclusions may not apply to you.

TO ARRANGE A REPAIR
 Call your local Nomadic Representative or Nomadic Display's Customer Service Center with your sales number and provide any other information that is requested.

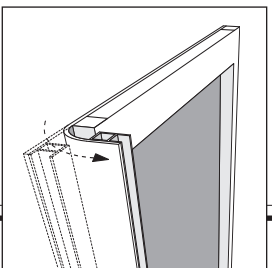
Sales Order Number _____

Warning! Do Not Stand on Counter. Maximum load is: 100lbs (45.45Kgs).

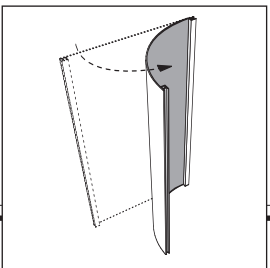
Curved Trapezoid Counter



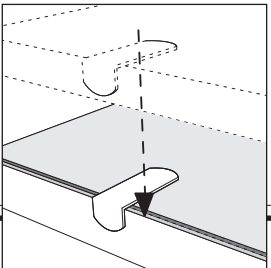
Attach / detach panels by sliding vertically...



...flex panel ends to create corners...

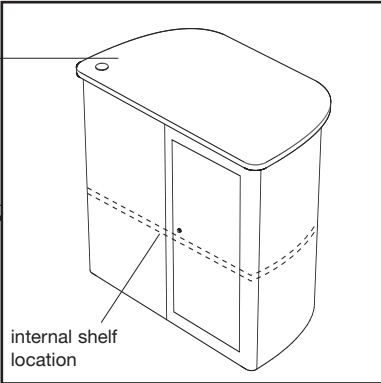


...or flex wide panels to create curves...



...then hook shelf onto mid-panel shelf brace.

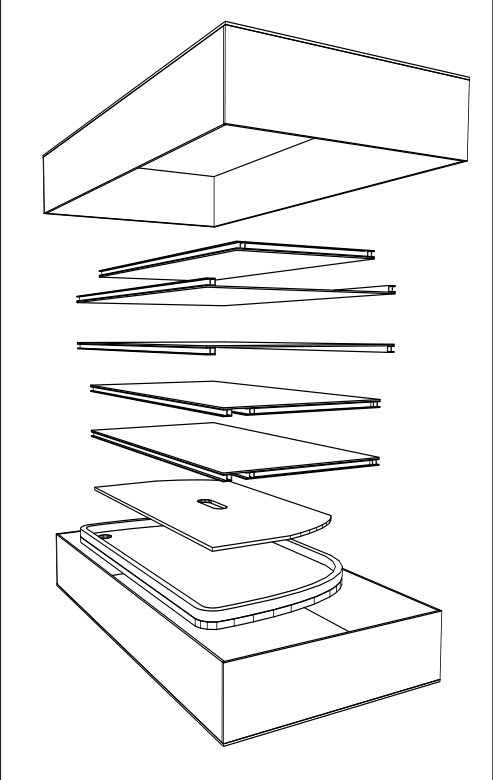
Place countertop in position.



Completed Counter

internal shelf location

Repacking Diagram



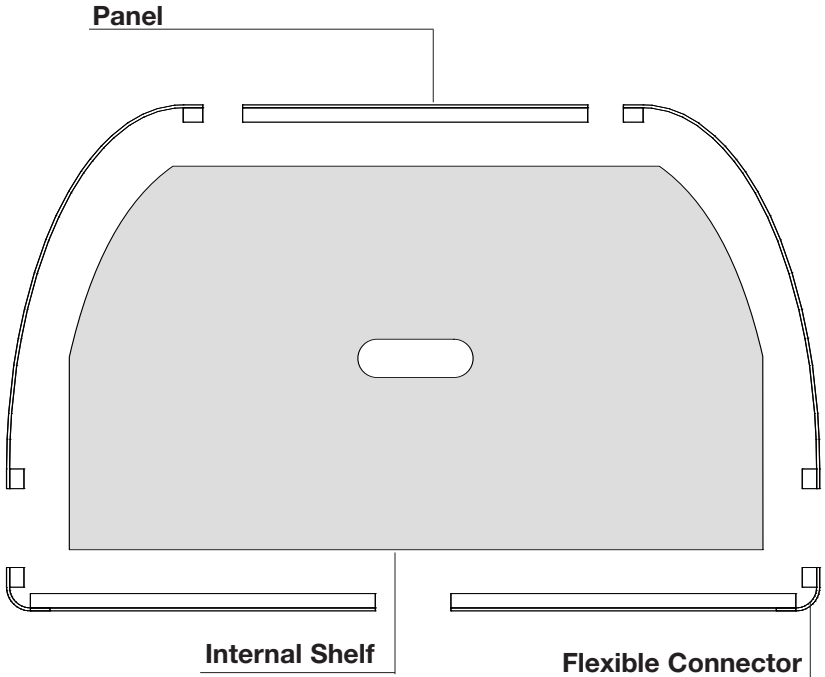
Your FlexCounter™ is so well-constructed... We GUARANTEE It!

WHAT IS COVERED
Repairs: This warranty covers repairs or replacements to correct defects during the Warranty Period.
Warranty Period: The warranty period begins on the day you receive covered Nomadic products that have been purchased on or after September 20, 2002, and ends at the expiration of the coverage listed below.
Coverage: FlexCounters are covered for defects due to materials or craftsmanship for one year while owned by the original retail purchaser.
Chargeable Repairs: Items not covered by warranty may be repaired at a reasonable cost that is agreed to in advance between you and Nomadic.
Shipping Costs: You will pay in and outbound shipping charges.

WHAT IS NOT COVERED
Graphics: No graphic, computer-graphic or photographic treatments of any kind are covered by this warranty. Damage due to vandalism, theft, fire, natural disasters, or losses in shipment may be covered by your insurance and/or common carrier. Please check these resources prior to calling Nomadic.
Consequential Expenses: Economic losses, including personal time and inconvenience, are not covered. Some states do not allow limitations on how long an implied warranty will last or the exclusion or limitation of incidental or consequential damage, so cited limitation or exclusions may not apply to you.

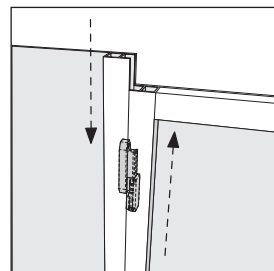
TO ARRANGE A REPAIR
 Call your local Nomadic Representative or Nomadic Display's Customer Service Center with your sales number and provide any other information that is requested.

Sales Order Number _____

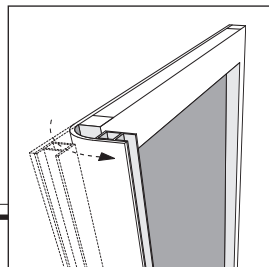


Warning! Do Not Stand on Counter. Maximum load is: 100lbs (45.45Kgs).

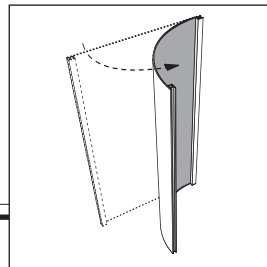
Bow Tie Counter



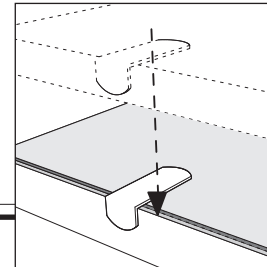
Attach / detach panels by sliding vertically...



...flex panel ends to create corners...

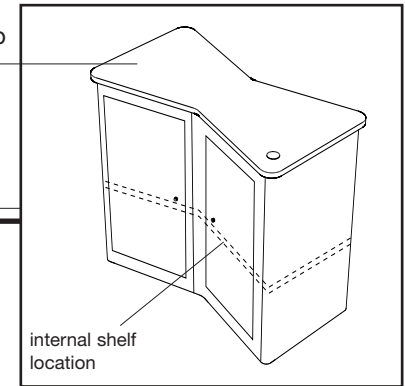


...or flex wide panels to create curves...



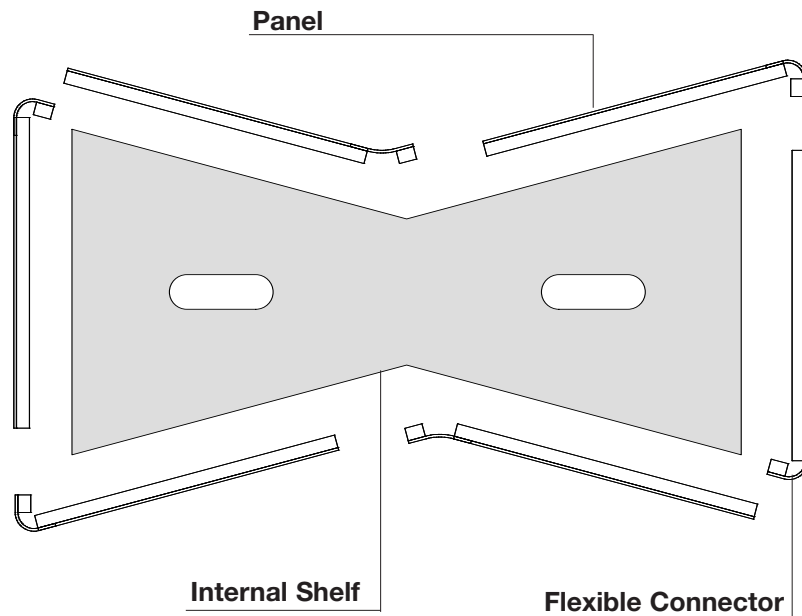
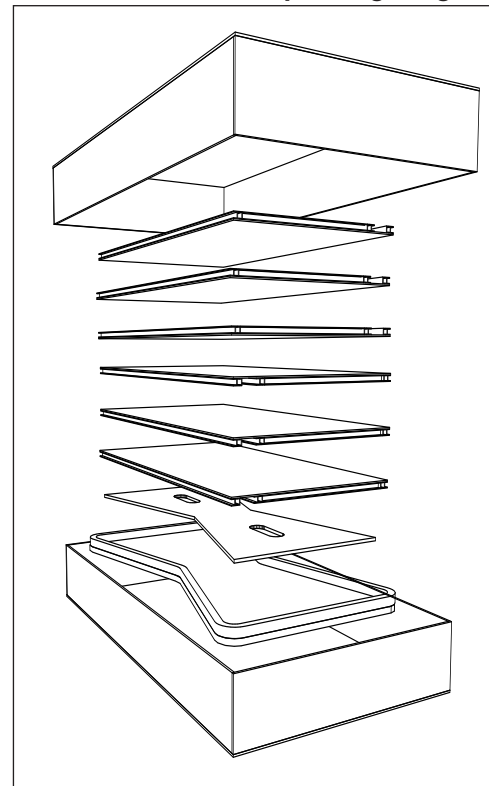
...then hook shelf onto mid-panel shelf brace.

Place countertop in position.



internal shelf location

Repacking Diagram



Your FlexCounter™ is so well-constructed... We GUARANTEE It!

WHAT IS COVERED

Repairs: This warranty covers repairs or replacements to correct defects during the Warranty Period.

Warranty Period: The warranty period begins on the day you receive covered Nomadic products that have been purchased on or after September 20, 2002, and ends at the expiration of the coverage listed below.

Coverage: FlexCounters are covered for defects due to materials or craftsmanship for one year while owned by the original retail purchaser.

Chargeable Repairs: Items not covered by warranty may be repaired at a reasonable cost that is agreed to in advance between you and Nomadic.

Shipping Costs: You will pay in and outbound shipping charges.

WHAT IS NOT COVERED

Graphics: No graphic, computer-graphic or photographic treatments of any kind are covered by this warranty. Damage due to vandalism, theft, fire, natural disasters, or losses in shipment may be covered by your insurance and/or common carrier. Please check these resources prior to calling Nomadic.

Consequential Expenses: Economic losses, including personal time and inconvenience, are not covered. Some states do not allow limitations on how long an implied warranty will last or the exclusion or limitation of incidental or consequential damage, so cited limitation or exclusions may not apply to you.

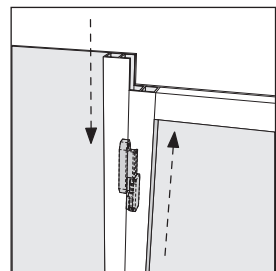
TO ARRANGE A REPAIR

Call your local Nomadic Representative or Nomadic Display's Customer Service Center with your sales number and provide any other information that is requested.

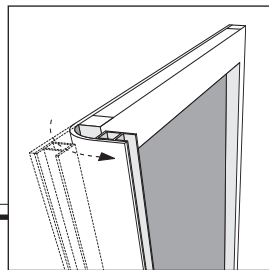
Sales Order Number _____

Warning! Do Not Stand on Counter. Maximum load is: 100lbs (45.45Kgs).

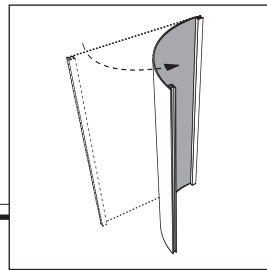
Rectangle Counter



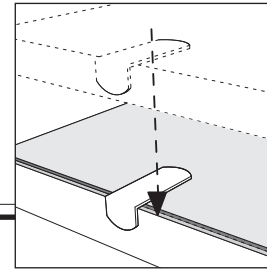
Attach / detach panels by sliding vertically...



...flex panel ends to create corners...

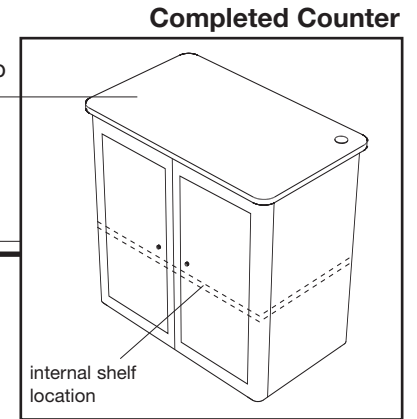


...or flex wide panels to create curves...



...then hook shelf onto mid-panel shelf brace.

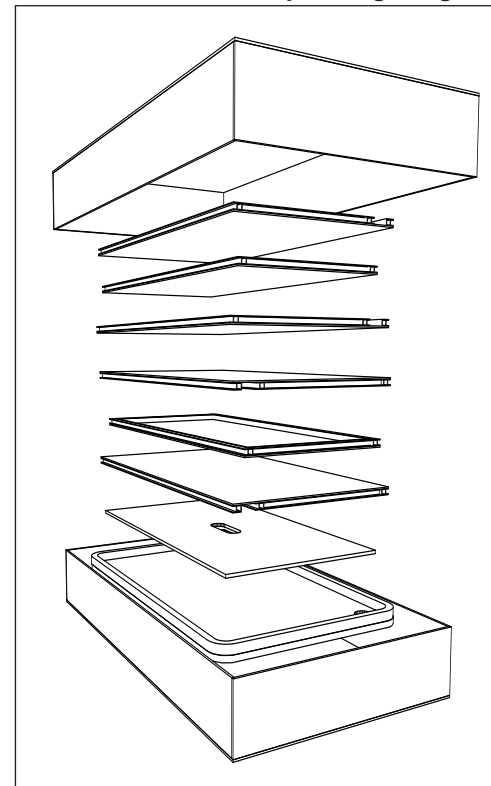
Place countertop in position.



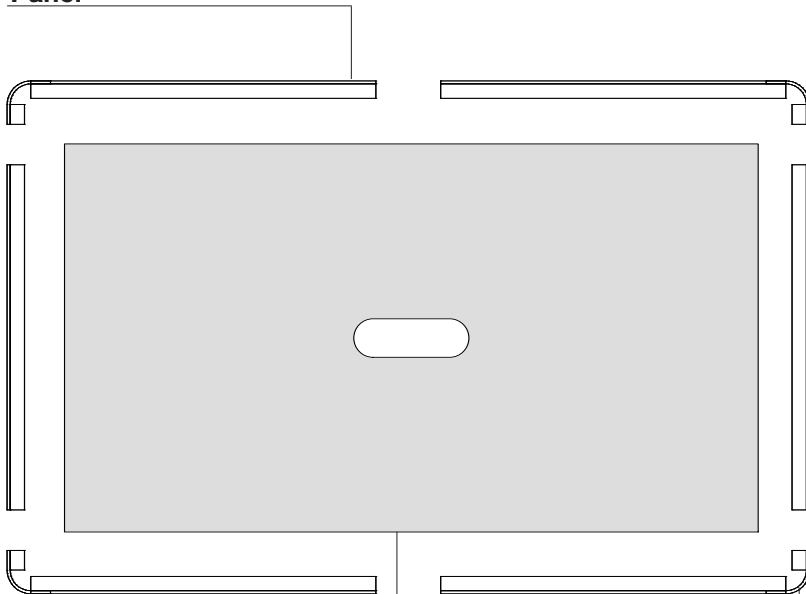
Completed Counter

internal shelf location

Repacking Diagram



Panel



Internal Shelf

Flexible Connector

Your FlexCounter™ is so well-constructed... We GUARANTEE It!

WHAT IS COVERED

Repairs: This warranty covers repairs or replacements to correct defects during the Warranty Period.

Warranty Period: The warranty period begins on the day you receive covered Nomadic products that have been purchased on or after September 20, 2002, and ends at the expiration of the coverage listed below.

Coverage: FlexCounters are covered for defects due to materials or craftsmanship for one year while owned by the original retail purchaser.

Chargeable Repairs: Items not covered by warranty may be repaired at a reasonable cost that is agreed to in advance between you and Nomadic.

Shipping Costs: You will pay in and outbound shipping charges.

WHAT IS NOT COVERED

Graphics: No graphic, computer-graphic or photographic treatments of any kind are covered by this warranty. Damage due to vandalism, theft, fire, natural disasters, or losses in shipment may be covered by your insurance and/or common carrier. Please check these resources prior to calling Nomadic.

Consequential Expenses: Economic losses, including personal time and inconvenience, are not covered. Some states do not allow limitations on how long an implied warranty will last or the exclusion or limitation of incidental or consequential damage, so cited limitation or exclusions may not apply to you.

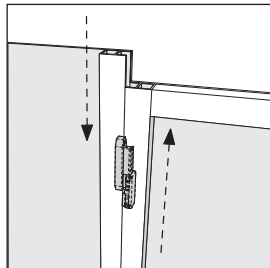
TO ARRANGE A REPAIR

Call your local Nomadic Representative or Nomadic Display's Customer Service Center with your sales number and provide any other information that is requested.

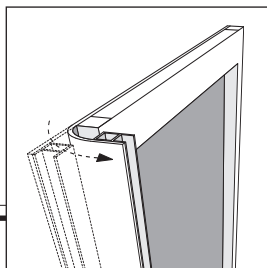
Sales Order Number _____

Warning! Do Not Stand on Counter. Maximum load is: 100lbs (45.45Kgs).

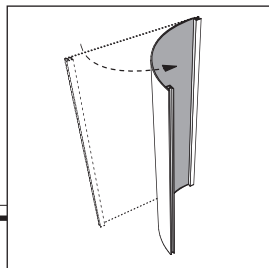
Peninsula Counter



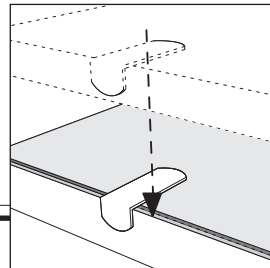
Attach / detach panels by sliding vertically...



...flex panel ends to create corners...

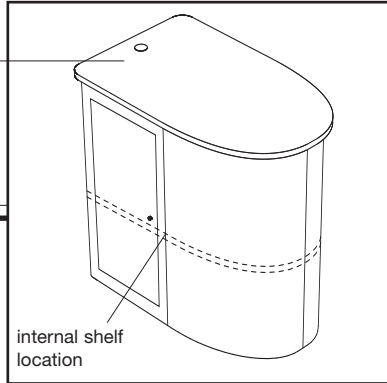


...or flex wide panels to create curves...



...then hook shelf onto mid-panel shelf brace.

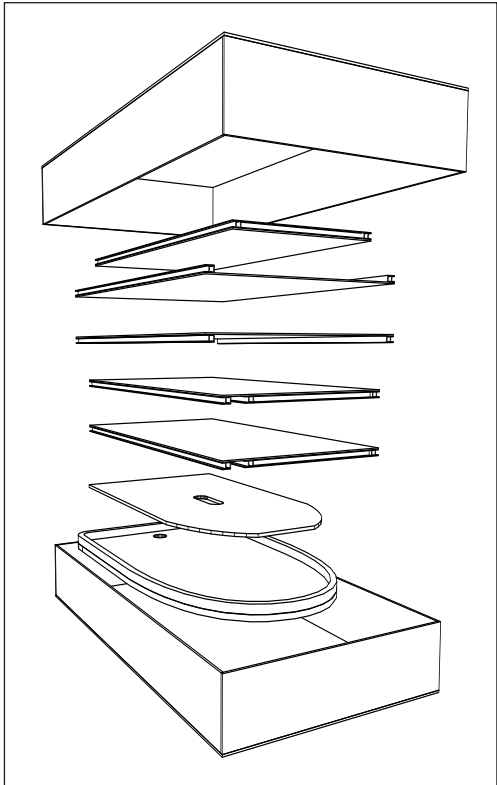
Place countertop in position.



Completed Counter

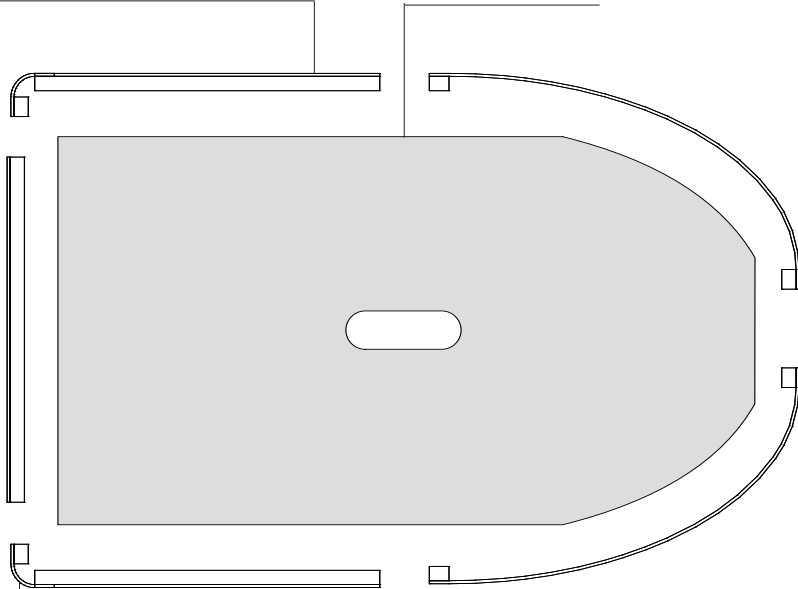
internal shelf location

Repacking Diagram



Panel

Internal Shelf



Flexible Connector

Your FlexCounter™ is so well-constructed... We GUARANTEE It!

WHAT IS COVERED
Repairs: This warranty covers repairs or replacements to correct defects during the Warranty Period.
Warranty Period: The warranty period begins on the day you receive covered Nomadic products that have been purchased on or after September 20, 2002, and ends at the expiration of the coverage listed below.
Coverage: FlexCounters are covered for defects due to materials or craftsmanship for one year while owned by the original retail purchaser.
Chargeable Repairs: Items not covered by warranty may be repaired at a reasonable cost that is agreed to in advance between you and Nomadic.
Shipping Costs: You will pay in and outbound shipping charges.

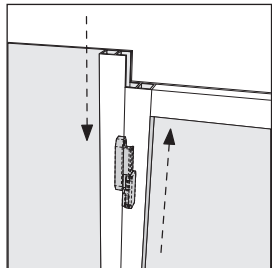
WHAT IS NOT COVERED
Graphics: No graphic, computer-graphic or photographic treatments of any kind are covered by this warranty. Damage due to vandalism, theft, fire, natural disasters, or losses in shipment may be covered by your insurance and/or common carrier. Please check these resources prior to calling Nomadic.
Consequential Expenses: Economic losses, including personal time and inconvenience, are not covered. Some states do not allow limitations on how long an implied warranty will last or the exclusion or limitation of incidental or consequential damage, so cited limitation or exclusions may not apply to you.

TO ARRANGE A REPAIR
 Call your local Nomadic Representative or Nomadic Display's Customer Service Center with your sales number and provide any other information that is requested.

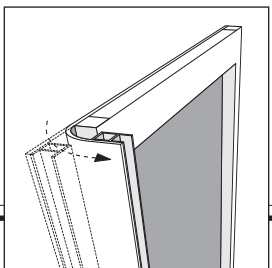
Sales Order Number _____

Warning! Do Not Stand on Counter. Maximum load is: 100lbs (45.45Kgs).

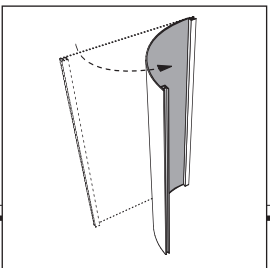
Instand Curved Trapezoid Counter



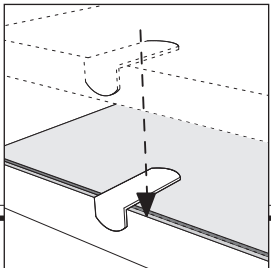
Attach / detach panels by sliding vertically...



...flex panel ends to create corners...

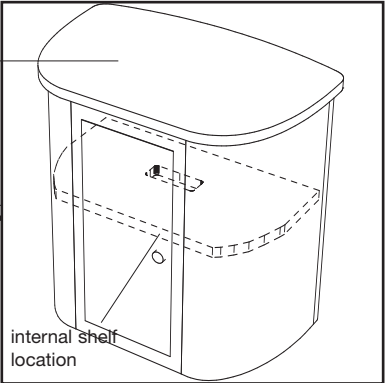


...or flex wide panels to create curves...



...then hook shelf onto mid-panel shelf brace.

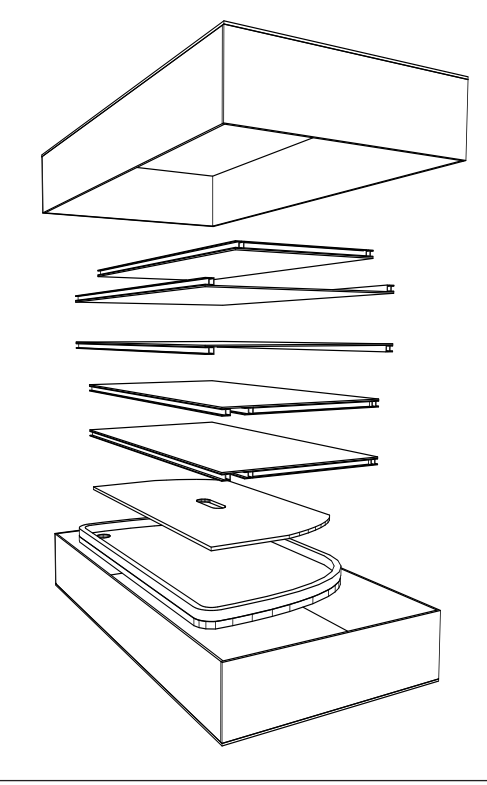
Place countertop in position.



Completed Counter

internal shelf location

Repacking Diagram



Your FlexCounter™ is so well-constructed... We GUARANTEE It!

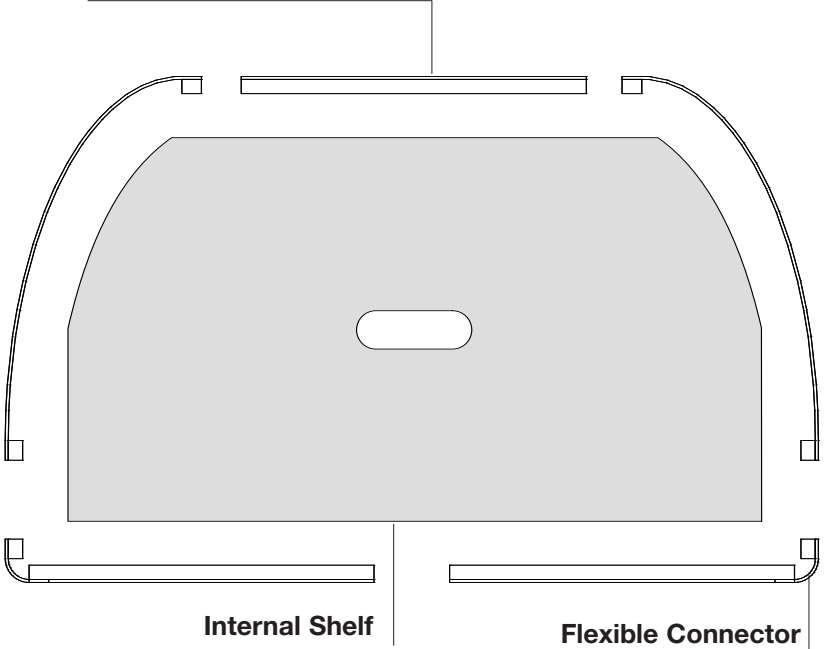
WHAT IS COVERED
Repairs: This warranty covers repairs or replacements to correct defects during the Warranty Period.
Warranty Period: The warranty period begins on the day you receive covered Nomadic products that have been purchased on or after September 20, 2002, and ends at the expiration of the coverage listed below.
Coverage: FlexCounters are covered for defects due to materials or craftsmanship for one year while owned by the original retail purchaser.
Chargeable Repairs: Items not covered by warranty may be repaired at a reasonable cost that is agreed to in advance between you and Nomadic.
Shipping Costs: You will pay in and outbound shipping charges.

WHAT IS NOT COVERED
Graphics: No graphic, computer-graphic or photographic treatments of any kind are covered by this warranty. Damage due to vandalism, theft, fire, natural disasters, or losses in shipment may be covered by your insurance and/or common carrier. Please check these resources prior to calling Nomadic.
Consequential Expenses: Economic losses, including personal time and inconvenience, are not covered. Some states do not allow limitations on how long an implied warranty will last or the exclusion or limitation of incidental or consequential damage, so cited limitation or exclusions may not apply to you.

TO ARRANGE A REPAIR
 Call your local Nomadic Representative or Nomadic Display's Customer Service Center with your sales number and provide any other information that is requested.

Sales Order Number _____

Door Panel



Internal Shelf

Flexible Connector

Warning! Do Not Stand on Counter. Maximum load is: 100lbs (45.45Kgs).